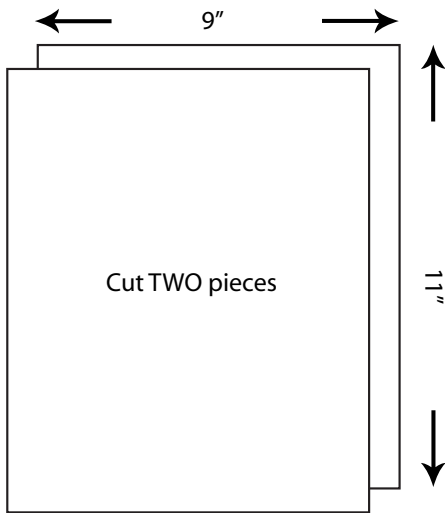
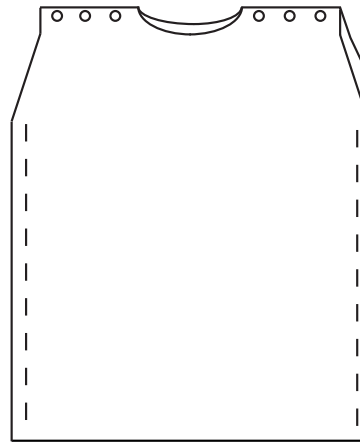


Pattern for tunic

STOLA



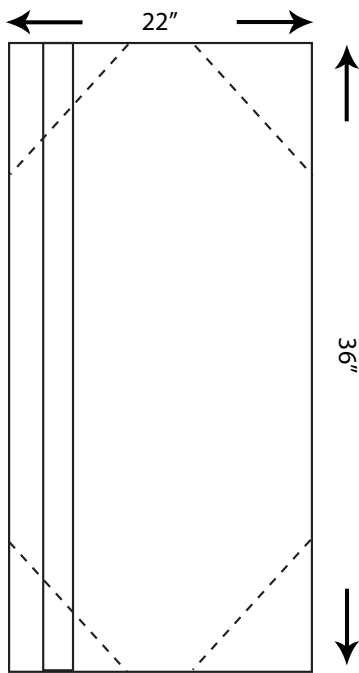
Sew back and front together with gathering stitch or connect with buttons and beads.



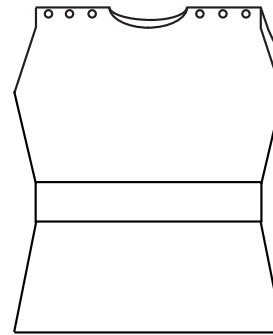
Sew side seams allowing for armholes.

TOGA

Cut corners at angles or curves.



OPTION: Hold front and back together by belting and "blousing."



Turn right side out and put on doll. Belt with cording and "blouse" to fall above knees.

PALLA

Long rectangle of soft, draping fabric
8-10" wide and 18" - 22" long.

Patterns for *stola* and *toga*