



« La Biagiola » International School of Archaeology (B.I.S.A.)

Campaign 2024

« The Stone and the River » Survey Project

SORANO, GROSSETO, TUSCANY, ITALY

29 JULY 2024 – 25 AUGUST 2024

Session 1: July 29 – August 11

Session 2: August 12 – August 25

You may attend one or both sessions.

Reserve your place now!

<https://www.culturaterritorio.org>

info@culturaterritorio.org





"The Stone and the River" Project

Human settlement in the Fiora valley is closely related to the river and the rocky landscape features.

This project investigates this diachronic relationship by studying and mapping the traces that man has left in the rock over time through building construction (e.g., castles, churches, villas, sanctuaries, and hamlets) and carving (necropoleis, hermitages, canals, roads, and production).

Furthermore, using the most modern technologies and photogrammetric surveys, three-dimensional models of the most significant sites will be created.

Join an Exciting Archaeological Campaign in the Tuscan Countryside!

L'Associazione "Cultura e Territorio" (the Association of Culture and Territory, or ACT) is a community of researchers, professionals, students, and enthusiasts that is dedicated to the protection and enhancement of cultural heritage.

ACT offers the BISA field school in collaboration with the Cultural Heritage Office of Tuscany, the regional authority that manages archaeological sites and monuments.

The BISA program is open to all students of archaeology, anthropology, classics, GIS, and related disciplines.

Apply Landscape Archaeology Theory and Methods

Gain hands-on experience as part of a landscape archaeology study that includes neolithic, chalcolithic, Etruscan, Roman, and Medieval sites. Tuscany is rich with cultural heritage!

Conduct Topographical, Archaeological, and Architectural Surveys

Working alongside expert archaeologists and fellow students from around the world, you will conduct field survey and reconnaissance operations using the latest methods and technologies. Survey locations may include castles, tombs, ancient roads, quarries, rock shelters, wine and oil production locations, and other sites and features spanning all eras of human activity.

Learn State-of-the-Art Digital Technologies

Geographic Information Systems (GIS), 3D photogrammetry, 3D digital models, Simultaneous Location and Mapping (SLAM), Visual SLAM (vSLAM), LiDAR, aerial photography, and other technologies are a primary focus of this project.

Excavate an Archaic Necropolis

Acquire the hands-on skills necessary for the ethical excavation of an archaeological site, including tools and techniques, artifact recovery and cataloguing, finds processing, documentation, record keeping, and photography.

Make an Essential Contribution to the Archaeology of Tuscany, Italy

This project will produce a census and database of sites that future archaeologists and researchers will use to identify, study, protect, and valorize cultural heritage sites.

Receive Instruction in English

The official language of the field school is English, and no knowledge of Italian is required. However, Italian or French knowledge will be taken as an advantage.

#archeology, #classical studies, #digital humanities, #medieval studies, #photogrammetry, #SLAM, #QGIS, #standing building archaeology, #public archaeology, #anthropology, #prehistory, #protohistory, #Etruscans, #Romans, #Middle ages, #ceramics, #metallurgy, #standing building archaeology, #architectural survey, #topographical survey, #reconnaissance, #archaeometry, #laboratory.



Goals of the 2024 Campaign

After the remarkable outcomes of our previous archaeological survey campaigns, we are excited to continue this important work.

Through a combination of intensive *field work*, *laboratory activities*, and *classroom instruction*, we will explore the cultural heritage of the middle Fiora River Valley, focusing on the major features of ancient Etruscan, Roman, and Early-Medieval cultures.

The goals of the 2024 Campaign are to:

- ◆ Conduct an archaeological field survey of the middle Fiora valley while learning to interpret topography and landscape features.
- ◆ Survey, map, photograph, and document structures, settlements, necropoleis, castles, roads, rock shelters, hamlets, villas, and other sites to build a GIS database using QGIS open source GIS software.
- ◆ Create 3D digital reconstructions (using Agisoft Metashape) of the most important sites, integrating vSLAM photogrammetric and LiDAR SLAM techniques.
- ◆ In collaboration with the "City of Tufo" Archaeological Park (Parco Archeologico Città del Tufo <https://cittadeltufo.com/>), excavate a splendid section of the archaic necropolis of the Via Cava di San Sebastiano.

This field school will benefit all archaeologists, but classical and medieval questions and themes will be emphasized.



Field Activities

The major component of the La Biagiola International School of Archaeology is rigorous field work.

Our goal is to complete meaningful field research while actively and intentionally educating participants.

Field work will primarily include physical archaeological survey, map analysis, photogrammetry, and census.

A once-in-a-lifetime opportunity to excavate a splendid Etruscan necropolis is also scheduled.

A team of skilled and experienced English-speaking archaeologists will lead the participants. These professionals will clearly explain every aspect of the work, answer questions, and engage in dialogue.

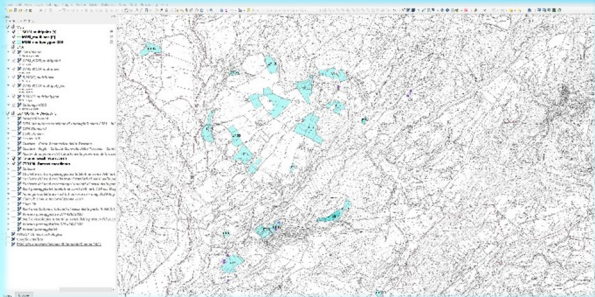


Lab Activities

Laboratories involving small groups of students under the supervision of a staff instructor will run parallel to field activities.

Training in drawing, pottery, vSLAM, SLAM, 3D modeling, photogrammetry, GIS applications, and open source archaeological record labs will be provided.

In addition, depending on the needs of the field research, the laboratories will focus on other topics, such as the archaeology of standing buildings, preservation of metal finds, ancient burial practices, and anthropological analysis.



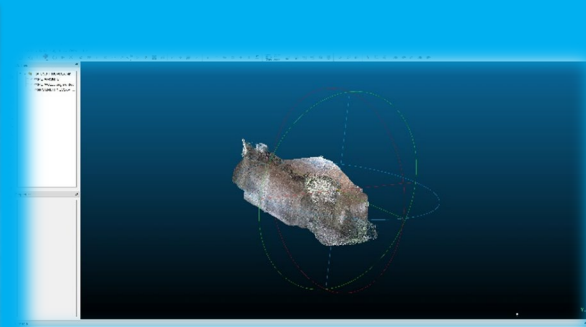
Classroom Instruction and Didactics

Lectures will be focused on archaeological method and theory applied to the case study of the middle Fiora River valley.

They will take place after fieldwork, interposed with cultural trips.

Topics may include:

- ◆ Public archaeology
- ◆ Local geology, topography, and landscapes
- ◆ The archaeological context of the project region
- ◆ Survey and other non-invasive techniques
- ◆ Archaeometry
- ◆ Digital archaeology
- ◆ Light and sensory archaeology
- ◆ Landscape archaeology
- ◆ Standing building archaeology
- ◆ Ancient construction techniques
- ◆ Archaeology of death
- ◆ Oil and wine in the Roman period
- ◆ Treatment, analysis, and conservation of finds



Schedule

Monday - Wednesday			Thursday		
Time	Activity	Location	Time	Activity	Location
7.00 am	Breakfast	Home	8.00 am	Breakfast	Home
8.30	Arrive on site/start lab activity	Field site / Lab (home)	8.00-13.00	Didactics / Cultural trip	Home / On site
8.30	Daily briefing	Field site / Lab (home)			
8.30-10.30	Survey/lab activities	Field site / Lab (home)			
10.30-10.45	Break	Field site / Lab (home)			
10.45-12.30	Survey/lab activities	Field site / Lab (home)			
12.30-13.00	Lunch	Field site / Lab (home)	13.00-14.00	Lunch	Home / On site
13.00-15.00	Survey/lab activities	Field site / Lab (home)	14.00-17.00	Didactics / Cultural trip	Home / On site
15.30-17.30	Classes/lab activities	Home	17.30-20.00	Free time	Home
17.30-20.00	Free time	Home			
20.00-...	Dinner and free time	Home			
20.00-...	Dinner and free time	Home	20.00-...	Dinner and free time	Home

Friday			Saturday		
Time	Activity	Location	Time	Activity	Location
7.00 am	Breakfast	Home	8.00 am	Breakfast	Home
8.30	Arrive on site/start lab activity	Field site / Lab (home)	8.00-13.00	Didactics / Cultural trip	Home / On site
8.30	Daily briefing	Field site / Lab (home)			
8.30-10.30	Survey/lab activities	Field site / Lab (home)			
10.30-10.45	Break	Field site / Lab (home)			
10.45-12.30	Survey/lab activities	Field site / Lab (home)			
12.30-13.00	Lunch	Field site / Lab (home)	13.00-14.00	Lunch	Home / On site
13.00-15.00	Survey/lab activities	Field site / Lab (home)	14.00-17.00	Didactics / Cultural trip	Home / On site
15.30-17.30	Classes/lab activities	Home	17.30-20.00	Free time	Home
17.30-20.00	Free time	Home			
20.00-...	Dinner and free time	Home			
20.00-...	Dinner and free time	Home	20.00-...	Dinner* and free time	Home

Activity	Hours/Week
Field work	30
Lab work	10
Lectures, cultural trips	8
Total work hours	48



The fieldwork and lab activities will take place **Mondays, Tuesdays, Wednesdays, and Fridays.**

Thursdays will be entirely dedicated to classroom instruction.

On **Saturdays**, we will embark on cultural excursions and visit museums and heritage sites.

**Participants are responsible for their own dinner expense on Saturdays.*

Sundays are reserved for arrivals, departures, and other logistics. For participants, Sundays will generally be free time.

Participants are responsible for their own lunch on Sundays.

Drawing, GIS, and digital archaeology instruction will be held regularly in parallel with fieldwork.

We will adjust activities and schedules as weather conditions and other logistical concerns require. During bad weather, laboratory work and museum visits will be prioritized.

Leisure

In addition to the archaeological experience, participants will enjoy a wide range of cultural sites, historic monuments, beautiful landscapes, medieval towns, world-class museums, and the natural beauty of Tuscany.

Because we are in the middle of a rich archaeological area, several cultural excursions in the surrounding area are planned, such as the Etruscan necropolis of Sovana, the impressive vie cave, Sorano, and the Pitigliano museums and castles.

Other leisure activities are plentiful. Bolsena Lake, the Saturnia baths, the numerous festivals, and the legendary Italian food and wine will make the experience enjoyable and unforgettable. We encourage fun and friendship!



Accommodations

Students will be accommodated in a modern facility in the Tuscan countryside, close to where communal activities and teaching will occur. The specific facility will depend on the number of participants joining the team.

Students can expect to sleep on a twin-sized bed. Rooms will have up to 3 beds with a private bathroom. Students will have access to a kitchen.

The schoolhouse address is: [Montebuono, 58010 Sorano GR](#)



Groups with more than 15 students



Groups of 3 or fewer students



Groups of 15 or fewer students



Travel Logistics

Arrival and Departure Locations

BISA is located in the municipality of Sorano (GR), in southern of Tuscany.

Students are responsible for arranging their own travel to and from Pitigliano, Italy.

Plan to arrive in Pitigliano on Sunday, preferably in the late morning.

Airport: The closest and most convenient airport location is Rome.

Suggested Itinerary

We suggest that participants fly to ROME. To assist with overcoming jet lag, consider spending a night in Rome.

From Rome, take a train to GROSSETO, and then a bus to PITIGLIANO.

On Sunday in the late morning, BISA personnel will pick up participants at the Pitigliano bus station and transport them to the accommodation. If necessary, we may be able to arrange a second meeting point in the afternoon.

After students complete their scheduled field school campaign, BISA staff will transport them back to the Pitigliano bus station on Sunday morning. Students must make their own travel arrangements for departure from Pitigliano.

Passports and Visas

Citizens of countries outside the Eurozone are required to carry a passport that is valid for at least six months following the date of their arrival in Italy.

No visa is required to enter the country for a stay shorter than 90 days.

Government Regulations and Travel Advisories

We strongly encourage all participants to read and review information relevant to traveling to Italy that is posted on their government Foreign Office website (e.g. [US Department of State's website](#)).



Meals, Laundry, Internet, and Other Considerations

Meals

The BISA fees include all meals *EXCEPT* dinner on Saturday and lunch on Sunday. No beverages other than water are included.

Participants eat breakfast at the accommodation. Breakfast is light European fare (e.g., coffee or cappuccino, milk, tea, bread, pastries, yogurt, fruit, etc.) Breakfast ingredients will be provided to you.

Depending on the day and activities, lunch will be provided either in the field or at the accommodation. *On Sundays, participants are responsible for their own lunch.*

Dinner, consisting of typical Italian dishes, will be held at the accommodation. *On Saturdays, participants are responsible for their own dinner.*

Special Dietary Requests

BISA staff will make every reasonable effort to accommodate students with food allergies (e.g., nuts, shellfish, etc.) or individual lifestyle and dietary choices (e.g., vegetarians).

The degree to which we are able to accommodate special requests depends on the complexity of the request and our ability to secure appropriate ingredients and recipes.

◆ **Students must make special dietary requests when applying to the program. We will not consider special dietary requests after application and acceptance.**

Laundry

Laundry service is not included. Students should wash their own laundry using the machines at the accommodation (staff will supply detergents). Laundromats are also available in Pitigliano.

Internet Access

Internet access will be available at the accommodation at no additional cost.

School participants may use their own devices to connect to the accommodation's Wi-Fi internet connection, or they may use staff devices upon request.

Mobile Devices

We strongly recommend that you have mobile service *before* your arrival in Pitigliano, preferably as soon as you arrive in Rome. Some wireless service providers offer international plans that you can purchase prior to leaving your home country, but these are often expensive. *When buying an Italian or International SIM card in Italy, do so when you arrive in the airport in Rome.* Good phone or data offers are harder to find in small towns than in the airports where salespeople are more accustomed to helping foreign customers.

Currency and Making Purchases

Although major credit cards are widely accepted throughout Italy, having a modest sum of cash may be useful for purchasing souvenirs, gifts, snacks, sundries, and personal items.

Every cash purchase must be in Euros. You may exchange money at local banks and exchange agencies, or withdraw it from local ATMs.

A student may ask BISA staff to assist with personal shopping needs at the student's expense.

Safety, Health, Clothing, and Equipment

Safety first!

BISA will supply all students with appropriate safety devices. The activities and cultural trips will comply with the highest safety standards.

All ACT's activities follow the rules prescribed by the Legislative Decree no. 81 of 9 April 2008, also known as "*Testo unico in materia di salute e sicurezza sul lavoro*", and the related corrective measures, according with the Cultural Heritage Office of Tuscany's dispositions.

Health Standards and Medical Consultation

Participation in BISA requires intense physical activity, and the local weather is usually hot and sunny. It is mandatory that all students consult their doctor to confirm that they will be able to endure the demands of working outdoors for a full day, including using hand tools, hiking in difficult terrain and woodlands, and carrying loads and equipment.

All students accepted into the program must provide a doctor's note stating that they are in good health and are able to participate in the field school safely. Participants with medical conditions or special needs must provide a specialist's note addressing the specific condition or concern. To guarantee safety and proper intervention in case of an emergency, physician's and specialist's notes must include medical history information. All medical and health information will be treated with absolute confidentiality and will not be disclosed to any third party unless required to safeguard the student's health.

Requirement for International Medical Insurance

- ◆ **All BISA participants must have a valid international medical insurance policy for the entire duration of their stay in Italy.**

Required Vaccinations

Given the potential exposure to pathogens in the soil, students *must* have had a tetanus vaccination or booster within the past ten years. No other vaccinations are required.

Clothing and Equipment

Students should bring appropriate clothing for summer weather. For field work, students will need the following (Please note that field clothes will likely get dirty, stained, or damaged):

- ◆ comfortable, durable, water-resistant long pants (no shorts allowed in the field)
- ◆ Shirts suitable for working outdoors
- ◆ hiking shoes or boots
- ◆ comfortable work gloves
- ◆ a hat, preferably wide-brimmed
- ◆ backpack
- ◆ sunscreen and insect repellent
- ◆ a flask or water bottle.

The following items are required for the accommodations:

- ◆ sleeping bag or sheet set
- ◆ shower and hand towels
- ◆ personal toiletries
- ◆ any personal medicine
- ◆ basic school supplies.

Local Transports

Each workday, the staff will drive the students, materials, and supplies to and from field locations, during cultural trips, and in case of emergency. When free from other activities, staff will try to grant students' requests for special trips.

Application Procedures

Admission Requirements

The La Biagiola International School of Archaeology (BISA) is open to both undergraduate and graduate students in archaeology, anthropology, classics, cultural resource management, and related disciplines.

No prerequisite courses are required. Students will receive all necessary training during the campaign.

Minimum Stay Requirement

- ◆ **Participants must attend at least one full 14-day shift.**

Application Procedure

An application form is available at www.culturaterritorio.org.

To apply, submit the following to info@culturaterritorio.org:

- ◆ Completed application
- ◆ Cover letter (1000 characters max), and
- ◆ Resumé or curriculum vitae (CV).

Application Deadlines

BISA staff must receive all application materials by **15 June 2024**.

Application Review and Acceptance

BISA staff reserves the right to, at their discretion, verify any information or request additional information or documentation (e.g., references, academic advising reports, etc.) as necessary.

Each applicant will receive an e-mail of acceptance or refusal.

Enrollment Requirements upon Acceptance

Upon acceptance, students will have to provide the following to complete their enrollment:

- ◆ Medical certificate of good mental and physical health and medical history – if students have medical conditions, a treating specialist must complete and sign the certificate.
- ◆ Proof of Insurance – **students must have a valid international health and injury insurance and must provide the insurance provider's contact information as well as the policy number.**
- ◆ Release form – the participant must read and accept the terms of the field school.
- ◆ Payment of 50% of the fees.

Once accepted, students will receive details about all of the above requirements.

Students must provide all required documents and 50% payment within one week of acceptance. Failure to meet these enrollment terms will cause an automatic forfeiture of the student's place in the school.

Final payment of all required fees is due on or before arrival at the field school.

Questions?

The BISA webpage is on the ACT website at: www.culturaterritorio.org.

For any further questions, please e-mail our director, Dr. Luca Mario Nejrotti at presidente@culturaterritorio.org. Or look for further information at.



Fees and Academic Credits

Fees

*Special rates will be applied to students from affiliated universities. AIA Members and students from partner institutions will get a **10% reduction**.*

A single 2-week session: € 2000

Both sessions (Entire campaign, 29 July 2024 – 25 August 2024): € 3600.

With AIA member discount: **€ 3240**

Fees include:

- ◆ Local transports
- ◆ Housing
- ◆ Meals (with some exceptions and limitations as described earlier)
- ◆ Excavation tools and expenses
- ◆ Laboratory equipment and expenses
- ◆ Staff costs.

The fees do not include anything that is not specified in the list above. Travel to and from Pitigliano before the school starts and after it ends is *not* included.

There is no application fee. However, *students must pay at least 50% of the above fees within one week of acceptance*. Half of this deposit (i.e., 25% of the total fees) is not refundable. The full balance is due upon arrival.

Cancellation or Withdrawal Policy

If a participant withdraws at least one week before the first day of the field school (i.e., on or before July 22), fees paid will be refunded minus the non-refundable deposit of **25%**.

If a participant withdraws less than one week before the first day of the field school (i.e., after Jul 22), no refund will be provided.

Payment method

Participants may pay fees with a direct bank transfer or through PayPal. A 50% deposit is due within one week of acceptance, and 100% of the fees due must be paid by the first day of the field school. If paying after arrival, payment must be in cash (euros).

Bank Account Information:

Associazione "Cultura e Territorio"
Via Baretti, 125 – 10125 Torino
C.F. 97687910014
IBAN: IT23R0321101001052848844830
Bank name: Banca Patrimoni Sella and C. S.p.A.
BIC: SELBIT22
SWIFT: SENVITT1XXX
Town: Torino, Piemonte, Italia

Participants must pay all money transfer costs.

You can also send money by PayPal to presidente@culturaterritorio.org. *PayPal payments MUST be a donation, not a purchase.*

Academic Credits

Students seeking academic credit for their participation in BISA will receive a signed certificate that details to all the activities completed during BISA.



Bibliography and Information

To know more, watch at these videos (subtitled):

<http://www.youtube.com/watch?v=KHCioAuDfI0>;

http://www.youtube.com/watch?v=fVdK-ACcuE&list=PLK1_iz-oV1WjmG7mcRd-elTCMiRH1J--g ;

<https://www.youtube.com/watch?v=XEPgmL-mkXE>;

https://www.youtube.com/watch?v=GX0eS_YS_Iw.

Bibliography

BARBIERI G., BUCCI I., DICIOTTI F., FERRARESE LUPI A., 2011, Sorano (GR) Località La Biagiola: saggio di scavo, in Notizie del "Notiziario della Soprintendenza per i Beni Archeologici della Toscana", 6.

FERRARESE LUPI A., 2011, Località La Biagiola: relazione preliminare di scavo (campagne 2009-2010), in BARBIERI G., Il territorio di Sovana. Un decennio di ricognizioni e indagini archeologiche, pp. 83-92.

TURCHETTI M. A., DICIOTTI F., CORSI J., NEJROTTI L., FERRARESE LUPI A., 2012, Sorano (GR). Indagini archeologiche nel sito della Biagiola: campagna di scavo 2011, in "Notiziario della Soprintendenza per i Beni Archeologici della Toscana", 7.

FERRARESE LUPI A., NEJROTTI L. M., TURCHETTI M. A., 2013, Indagini archeologiche nel sito della Biagiola campagna 2012, in Notizie del "Notiziario della Soprintendenza per i Beni Archeologici della Toscana", 8, 2012, pp. 618-621.

NEJROTTI L. M., TURCHETTI M. A., 2014, Indagini archeologiche nel sito della Biagiola campagna 2013, in Notizie del "Notiziario della Soprintendenza per i Beni Archeologici della Toscana", 9, 2013, pp. 518-519.

NEJROTTI L. M., BUCCI I., TURCHETTI M. A., 2015, Indagini archeologiche nel sito della Biagiola campagna 2014, in Notizie del "Notiziario della Soprintendenza per i Beni Archeologici della Toscana", 10, 2014, pp. 528-530.

Http://www.fastionline.org/excavation/micro_view.Php?Fst_cd=aiac_4355&curcol=sea_cd-aiac_8781.

Join Our International Community!!!

We know how important it is to compare different scientific methods and to connect with people from different backgrounds. Over the years, we have been able to create relationships that go beyond the simple duration of the campaign and still last today.



Please note that the BISA mascot is a very good big dog. Those who are allergic or particularly afraid of dogs should choose another school.

