

**Three exciting shifts (May, July and August): an eight-week program uncovering ancient Etruscan, Roman, and Lombard civilization!**

The “la Biagiola” special program for students provides a first-hand experience from the fieldwork activities to the communication to the public.

We provide the exciting opportunity to learn how to study a multi-layered site.

Students will take part in the exploration of an ancient site in Tuscany, working alongside expert archaeologists and others foreign students.

The school also provide a complete formation in standing building archaeology, survey, and medieval castles studies, and, last but not least, students will be involved in the creation of a popularization documentary.

This program is offered in collaboration with the cultural heritage office of Tuscany, the regional authority that manages archaeological sites and monuments.

In addition to the archaeological experience, participants will be able to enjoy a wide range of cultural sites, historic monuments, and natural sites of Tuscany.

**The School is taking place from 13 to 27/May and from 15/July to 26/August/2019.**

**FIRST SHIFT: from May 13 to May 27:**

**SECOND SHIFT: from July 15 to August 5:**

**THIRD SHIFT: from August 6 to August 26.**

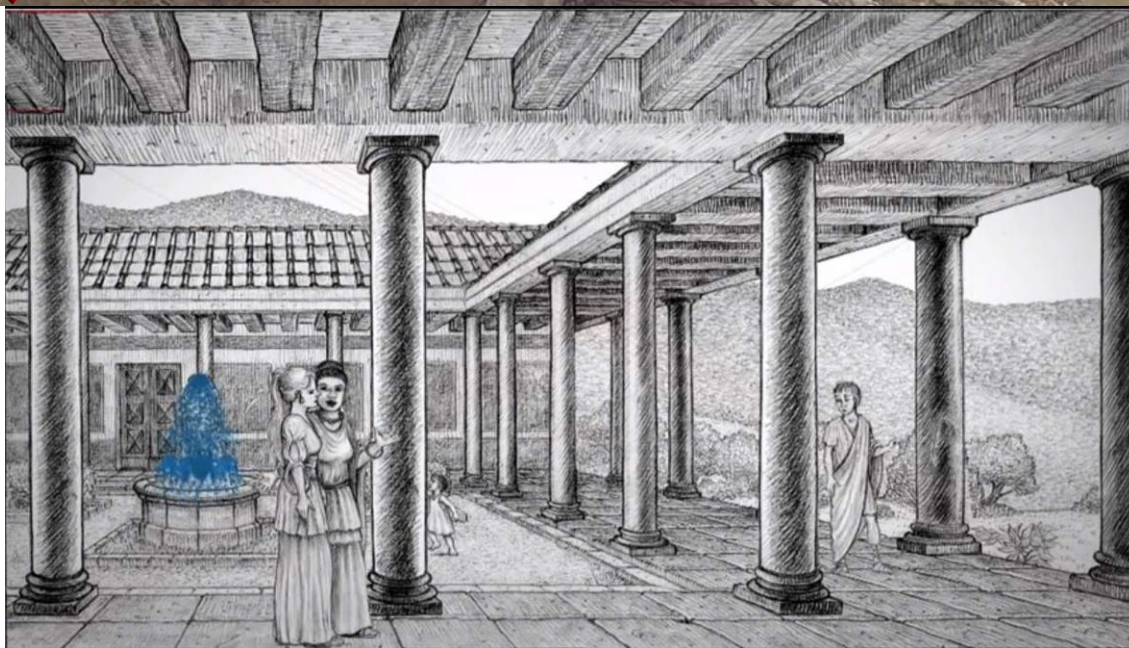
**Featured disciplines**

Anthropology, Archaeology and Museology.

**Coursework**

You will experience all aspects of an archaeological career; fieldwork, architectural archaeology, burial archaeology, scientific analysis, physical anthropology, artifact conservation, and cutting-edge open source digital archaeology. Moreover, coursework will explore and focus on the major features of ancient Etruscan, Roman and Early-Medieval cultures.





### The site

**The evolution of an Etruscan villa through centuries: from the Roman period, to the Lombard occupation, up to a Modern era rural settlement.**

“La Biagiola” archaeological site, near Sovana di Sorano (GR), Tuscany, was discovered by the volunteers of *Gruppo Archeologico Torinese* in 2004, during a survey project led by the *Soprintendenza per i Beni Archeologici della Toscana*.

After a few sample digs, held from 2008 to 2011, the Association “*Cultura e Territorio*” (ACT) has been entrusted with the archaeological research.

At present, the history of the site is quite clear in outlines: an Etruscan rural settlement, at least two phases of a Roman *villa*, a Late Antiquity settlement, a Lombard graveyard and a Modern farm follow each other, sometime destroying previous layers, mostly just overlapping them.

The excavations are carried on thanks to *Soprintendenza per i Beni Archeologici della Toscana*, “*la Biagiola vitivinicola*”, Kaustic Plastik, the municipality of Sorano, and many private donors.

Now we are ready to expand our excavations of the medieval cemetery and to explore the new facilities of the Roman *villa*. Plus: we have found, during the last campaign new structures of the Etruscan settlement, that are waiting to be fully studied.

In 2019, after five successful campaigns, we intend to open again the International School of Archaeology to students from all over the world, who wish to experience archaeological excavations in Italy.

**The School is taking place from 13 to 27/May and from 15/July to 26/August/2019.**





The aims of the 2019 Campaign are:

- complete the excavations of the Roman bath ruins in order to uncover the ancient villa plan;
- continue the exploration of the Lombard cemetery;
- find the early medieval church supposed to be near the cemetery;
- investigate some service facilities of the Roman farm: a likely oil or wine press area;
- survey, study and cataloguing the medieval castles nearby (**project “Stone Crown”**);
- shoot a documentary about “la Biagiola” and the cultural heritage of the territory (**project “Archaeology on stage”**).

**The program will be beneficial for both Classical and Medieval archaeologists.**

As bonus activities, students will be involved, periodically, in two side projects.

The **“Stone Crown”** project consists of survey activities that aim to discover, catalogue and study some “lost” medieval castles identified this fall in the territory of Sovana. The program will include photogrammetry and wall stratigraphic analysis, with a focus on ancient building techniques.

The **“Archaeology on stage”** project will see the cooperation between archaeologists and professional directors, actors and film makers with the purpose of shooting a multimedia documentary about “la Biagiola” site and its territory.

**Students will be involved in all the backstage activities of a video and theatrical production.**

In addition, students will be involved in the “la Biagiola open air archaeological park” creation.



## Archaeology on stage

Communication in archeology is important! Knowing how to explain historical and archaeological contents to the wider public in a clear and addictive way is the last frontier for the most up-to-date archaeologists.

For this reason, **during the May shift** of “la Biagiola” International School of Archaeology, alongside the archaeological research activities, there will be an immersive stage with lessons and workshops with actors, directors and film makers on how to create a multimedia archaeological documentary to be made available online.

Cinema, theater and animation will be combined in a unique educational experience.





## The Stone Crown project

To better understand the settlement dynamics of the "La Biagiola" territory, especially in the early Middle Ages, it became necessary to extend the study to the fortified sites of the area.

In the summer shifts, alongside the excavation activity on the site, the students will be involved in a survey and study project of the castles of the area: from discovery, to exploration, from analysis of the wall stratigraphy to the study of medieval building sites, surrounded by the splendid setting of the Fiora river hills.



Tutorial activities will be focusing on the following topics (a complete dossier will be given to participants):

### Archaeology

1. Roman pottery
2. Roman rural facilities
3. Medieval pottery
4. Early Medieval metallurgy
5. Modern pottery

### Methodology

1. Archaeology of standing buildings
2. Burial archaeology
3. Total station and archaeological drawing
4. Open source documentation software
5. G.I.S.



6. Preservation of archaeological finds
7. Analyzing, drawing and cataloging archaeological finds.

## History

1. Roman settlement in the Sovana territory
2. Sovana in the Early Middle Ages: a contended territory between Langobards and Byzantines
3. The Aldobrandeschi medieval dominion
4. Archeology of the Modern era: rural settlement archaeology.



The fieldwork excavations will be a major portion of the training focus for the participants. The trainees will be guided through this new adventure by a team of skillful archaeologists who will be able to explain clearly every aspect of the research process.

Since the site is located in the middle of a rich archaeological area, several cultural excursions in the surroundings are planned, such as the Etruscan necropolis of Sovana, the impressive *vie cave*, Sorano and the Pitigliano museums and castles.



Not to forget the various leisure activities that are also included: Bolsena Lake, Saturnia baths and the numerous Italian festivals will make the experience enjoyable and unforgettable.



## History

The territory of Sovana has been inhabited since Prehistory.

Today the area is well known for its Etruscan necropolis, medieval castles and churches.

Archaeological research however, continues revealing new artifacts and new interesting aspects of human civilization through centuries.

For example, it is well known that the Romanization phenomena in the area took place between the 3<sup>rd</sup> and the 2<sup>nd</sup> century BC, but little is yet known about the Roman settlement in the countryside. Undoubtedly during the 6<sup>th</sup> and 7<sup>th</sup> c. AD here was the awkward boundary between the Byzantine and Lombard lands, but archaeological evidence from this period are very scarce.



Indeed, the peculiarity of the site lies in its multilayer stratification: a Roman villa grew over a late Etruscan settlement; afterwards, the Roman facilities were re-used by a Lombard group during the early middle ages, when the site was turned into a cemetery. Those graves that have already been excavated contained an abundance of precious and interesting goods. Finally, the villa was largely abandoned up to the present time: only one building survived over the centuries, which was transformed into a shed.

Though the walls and the tombs are only partially preserved, they can still undoubtedly supply a lot of archaeological information. When the research is completed the site will be converted into an archaeological park, and “la Biagiola” will become one more attraction in the already rich cultural landscape of Sovana.

Since 2012 the site has represented the core of research and promotional activities carried out by professional archaeologists, coordinated by the association “Cultura e Territorio” under the supervision of the Superintendence for Archaeological Heritage of Tuscany (SBAT).

The project is supported by the Municipality of Sorano and it is funded exclusively by private donations. In addition, individual donors and companies, sensitive to the local cultural development, have decided to invest in the 2013 campaign of archaeological investigation and maintenance; they are well aware that popularization and promotion must be based on a rigorous scientific research and must ensure the protection of the Cultural Heritage.

The start of the project in 2012 was thanks to the financial support of the winery “la Biagiola”, leading to the discovery of the surviving structures of the Roman villa. In the meantime, archaeologists also continued the excavation of the graveyard previously started by GAT’s volunteers.

To know more, take a look at these videos (subtitled):

<http://www.youtube.com/watch?v=KHCioAuDfIO>;

[http://www.youtube.com/watch?v=fVdK-ACcuE&list=PLK1\\_iz-oV1WjmG7mcRd-elTCMiRH1J--g](http://www.youtube.com/watch?v=fVdK-ACcuE&list=PLK1_iz-oV1WjmG7mcRd-elTCMiRH1J--g);

<https://www.youtube.com/watch?v=XEPgmL-mkXE>;

[https://www.youtube.com/watch?v=GX0eS\\_YS\\_lw](https://www.youtube.com/watch?v=GX0eS_YS_lw)

## Bibliography

BARBIERI G., BUCCI I., DICIOTTI F., FERRARESE LUPI A., 2011, *Sorano (GR) Località La Biagiola: saggio di scavo*, in *Notizie del “Notiziario della Soprintendenza per i Beni Archeologici della Toscana”*, 6.  
 FERRARESE LUPI A., 2011, *Località La Biagiola: relazione preliminare di scavo (campagne 2009-2010)*, in BARBIERI G., *Il territorio di Sovana. Un decennio di ricognizioni e indagini archeologiche*, pp. 83-92.  
 TURCHETTI M. A., DICIOTTI F., CORSI J., NEJROTTI L., FERRARESE LUPI A., 2012, *Sorano (GR). Indagini archeologiche nel sito della Biagiola: campagna di scavo 2011*, in *“Notiziario della Soprintendenza per i Beni Archeologici della Toscana”*, 7.



FERRARESE LUPI A., NEJROTTI L. M., TURCHETTI M. A., 2013, *Indagini archeologiche nel sito della Biagiola campagna 2012*, in *Notizie del “Notiziario della Soprintendenza per i Beni Archeologici della Toscana”*, 8, 2012, pp. 618-621.

NEJROTTI L. M., TURCHETTI M. A., 2014, *Indagini archeologiche nel sito della Biagiola campagna 2013*, in *Notizie del “Notiziario della Soprintendenza per i Beni Archeologici della Toscana”*, 9, 2013, pp. 518-519.

NEJROTTI L. M., TURCHETTI M. A., 2015, *Indagini archeologiche nel sito della Biagiola campagna 2014*, in *Notizie del “Notiziario della Soprintendenza per i Beni Archeologici della Toscana”*, 10, 2014, pp. 528-530.

[http://www.fastionline.org/excavation/micro\\_view.php?fst\\_cd=AIAC\\_4355&curcol=sea\\_cd-AIAC\\_8781](http://www.fastionline.org/excavation/micro_view.php?fst_cd=AIAC_4355&curcol=sea_cd-AIAC_8781)





## The Summer School 2019

### General schedule

Activity	2 week shift, hours	6 week shift, hours
Excavation and survey (field activities)	30,0	180,0
Lab activities	28,0	84,0
Classes, cultural trips	10,0	60,5
<b>Total work hours</b>	<b>68,0</b>	<b>324,0</b>

### Daily schedule

Week day schedule		
Time	Activity	Location
6.15-7.00 am	Breakfast	At home
7.30 am	Arrive on site/start lab activity at home	At home/on site
7.30-8.00 am	Daily briefing	At home/on site
8.00-10.30 am	Excavation/lab activities	At home/on site
10.30-11.00 am	Break	At home/on site
11.00 am-1.00 pm	Excavation/lab activities	At home/on site
1.00-2.00 pm	Lunch	At home
2.00-4.00 pm	Classes/lab activities	At home/nearby
4.00-7.00 pm	Free time	At home/nearby
7.00-8.00 pm	Dinner	At home
8.00 pm-...	Free time	At home/nearby
Saturday schedule		
7.15-8.00 am	Breakfast	At home
8.00-12.30 am	Didactics/cultural trip	At home/on site
1.00-2.00 pm	Lunch	At home
2.00-7.00 pm	Free time	At home/nearby
7.00-8.30 pm	Dinner. <u>DINNER NOT PROVIDED BY STAFF.</u>	At home
8.30 pm-...	Free time	At home/nearby
Sunday schedule		
8.15-9.00 am	Breakfast	At home
9.00 am-8.00 pm	Free time. <u>LUNCH NOT PROVIDED BY STAFF.</u>	At home/nearby
8.00-9.30 pm	Dinner	At home
9.30 pm-...	Free time	At home/nearby

Classes, labs and field activities will take place daily, from Monday to Friday.

Drawing, G.I.S. and pottery laboratories will be held regularly in parallel with excavation. Such activities will be held at staff's discretion and will involve only small groups of students (2-5) at a time. Saturday's schedule will be a half day of work and Sunday is totally free, in order to give students the chance to enjoy their stay in Italy. Students are encouraged to take sightseeing trips to nearby cities and the staff will be glad to help organize and guide them, if their destination is in the surroundings.





## Field activities

2019 Campaign will focus on three sectors of the site. Students will practice in each sector, led by one or two archaeologists of the staff.

**The villa's ruins:** two rooms of the original Roman villa have been reoccupied during the Modern era and transformed in a typical farm. Special attention will be paid to the standing walls: they will be analyzed according to the methods of the Archeology of standing buildings. In 2019 the exploration of the rests of the villa will allow us to discover the original building plan and the presence of a supposed to be early medieval church.

**The Lombard graveyard:** previous excavations uncovered an impressive graveyard in which Langobard objects have been found. Those typical findings allowed us to date the graves to the first half of 7<sup>th</sup> century A.D. With the help of our students this past summer, an extremely successful exhibit of this period was presented to the public, raising interest to continue the investigation of the Lombard graveyard. Since surveys have detected clues pointing to more burials to be discovered, one of the first aims of the new campaign is to outline the topography of the surrounding landscape. Burial Archaeology methods and anthropological analyses will be adopted for the discovered graves. As metal objects are the typical findings related with the burials, special attention will be paid to the methodology of metal artifacts preservation.

**The villa's facilities:** a complex of farm facilities has already been detected. The 2019 Campaign will try to interpret and understand their function in the light of Roman rural production cycles, and also to unearth a huge building found near the oil press.





## Lab activities

Laboratories will run parallel to field activities, involving small groups of students at a time under the supervision of a staff instructor.

Training in drawing, pottery, total station, G.I.S. and open source archaeological record labs will be provided. In addition, depending on the needs of the field research, the laboratories will also focus on other topics, such as Archaeology of standing buildings, metal find preservation and anthropological analysis.



## Lectures

Lectures will be focused on local history and on the archaeological method and theory. They will take place in the afternoon, interposed to cultural trips.

## The staff

All activities will be led by a staff of qualified archeologists, skilled in both archaeological research and teaching methods.

The staff has been entrusted by the *Soprintendenza Archeologica della Toscana* of researching and preserving the “la Biagiola” site, since 2012.

The scientific supervisor is Dr. Luca Mario Nejrotti, *Chercheur Associé* at the LA3M – Université d’Aix-Marseille – CNRS, Ph.D. in Medieval Archaeology.

[univ-amu.academia.edu/LucaMarioNejrotti](http://univ-amu.academia.edu/LucaMarioNejrotti)

Each member of the staff has been chosen for their specific technical knowledge in archaeological methods and in the recording activities linked with our field work; they have also been chosen for their experience in managing archaeological field campaigns with volunteers and students.

We are well aware that archaeological research is a fascinating study but very hard work and we will do our best to make the experience formative and pleasant at the same time.



## Safety first!

All students will be equipped with appropriate safety devices. The activities and cultural trips will be conducted in compliance with the higher safety standards.

All ACT’s activities follow the rules prescribed by the Legislative Decree no. 81 of 9 April 2008, also known as “*Testo unico in materia di salute e sicurezza sul lavoro*”, and the related corrective measures, according with the Cultural heritage office of Tuscany’s dispositions.



### Admission procedures

The “la Biagiola” International School focuses on archaeological method, applied on a multilayered site: from the Etruscan age to the Modern era.

The 2019 Campaign is open to both undergraduate and graduate students in Archaeology.

Admission is limited to 25 students per session.

No prerequisites are requested for the School; students will be adequately trained during the campaign.

Students interested in the International School must submit their application with a cover letter (1000 characters maximum) and a CV to [info@culturateritorio.org](mailto:info@culturateritorio.org).

**Minimum stay: MAY 2 weeks; SUMMER 3 weeks.**

### Application deadlines:

May shift (from MAY 13 to 27, 2019): **22/04/2019**.

July-August shifts (from JULY 15 to AUGUST 26, 2019): **10/06/2019**. The staff reserves the right to verify any information reported in the CV and to request additional documentation (e.g.: advising reports; references) at its discretion, before coming to a decision on the enrollment.

An e-mail of confirmation or refusal will be sent to each applicant.

Upon acceptance, students will receive detailed information on the following enrollment requirements:

1. Medical certificate of good mental and physical health and medical history – if students have medical conditions, the certificate should be filled out and signed by a treating specialist.
2. Proof of Insurance – students must have a valid international health and injury insurance and must provide the insurance provider’s contact information as well as the policy number.
3. Release form – the participant must read and accept the terms of the field school; a signed release form must be submitted before the starting date of the Summer School.
4. Travel itineraries – all students must provide their detailed travel itinerary as soon as possible. This information will allow the staff to arrange airport/train station pick-ups and drop-offs in advance.
5. Payment, to be made through credit transfer. 50% of the payment will be requested within 1 week after acceptance (last deadline: **10/06/2019**). Balance should be paid upon arrival at the Summer School.

Students will be required to provide all documentation and the 50% deposit within one week from acceptance. The failure to provide all above mentioned documents and payment within the terms means an automatic forfeiture of the student’s place in the Summer School.

For any further question, please e-mail our director Dr Luca Mario Nejrotti at

[presidente@culturateritorio.org](mailto:presidente@culturateritorio.org). Or look for further information at [www.culturateritorio.org](http://www.culturateritorio.org).



## Fees

Type	May shift (2 weeks) €	Summer Short shift (3 weeks) €	Summer Whole campaign €
Normal price	1400	1800	2800
AIA Member	1300	1700	2700
Participant bringing three or more paying appliers	700	900	1400
Veteran	1200	1400	2400

**NO USD PAYMENT WILL BE ACCEPTED. AS FOR MONEY TRANSFER, ALL BANK FEES AND CHANGES ARE TO BE CONSIDERED UPON APPLIERS.**

AIA Members will get a **€ 100** reduction.

We do encourage the participation of small groups of friends or class mates. If a participant brings **three or more friends** he/she will get a **50%** reduction.

Fees will cover local transports, housing, meals, excavation, laboratory equipment, and staff costs; anything not specified is not included.

There are no application fees; however, students are required to pay half support fees within 1 week after admission.

**Travel to and from Sorano, where the Summer School is held, is not included.**

In case of withdrawal up to three weeks before the start of the International School, the fee will be refunded minus a non-refundable deposit of **€ 500**.

**After this term** fees will not be refunded.

**Payment method:** money transfer to our bank account.

Associazione “Cultura e Territorio”

Via Ormea, 122 – 10126 Torino

C.F. 97687910014

IBAN: IT23R0321101001052848844830

Bank name: Banca Patrimoni Sella and C. S.p.A.

BIC: SELBIT22

SWIFT: SENVITT1XXX

Town: Torino, Piemonte, Italia

You can pay just the first 50% of the amount OR the whole amount plus any costs for the money transfer.

In case you choose to pay just half fee you should be able to pay the balance upon arrival, in cash.

AS A FRIEND, you can also send money by Paypal to our account (presidente@culturaterritorio.org).

## Credits

In order to enable students to gain credits from their University, a signed certificate will be issued, testifying all the activities of the Summer School in details.

## General info

### Arrival and departure

Students are responsible for arranging their own travel to and from Italy. The Summer School is taking place in the municipality of Sorano (GR), in the south of Tuscany.

The closest airport is located in Rome. We suggest the students to reach Rome by flight and take a train to **GROSSETO**.

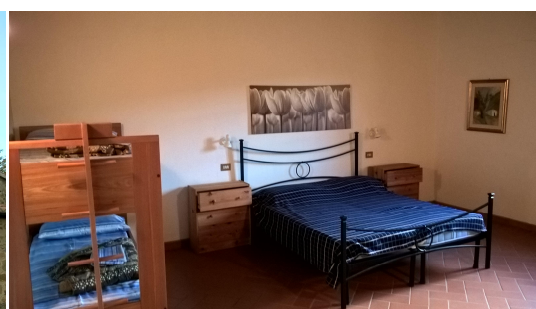
On Monday, **May 13**, a meeting point will be arranged at **GROSSETO Railway Station** in the late morning for the first appliers. Students will be driven to the Summer School accommodation by the staff. A second meeting point will be arranged at **GROSSETO Railway Station** in the first afternoon.

On Monday, **May 27**, the staff will drive the students, in the morning, to **GROSSETO Railway Station**, where they could take trains to their departure place or any further destination.

On Monday, **July 15** a meeting point will be arranged at **GROSSETO Railway Station** in the late morning for the first appliers. Students will be driven to the Summer School accommodation by the staff. A second meeting point will be arranged at **GROSSETO Railway Station** in the first afternoon.

On Monday, **August 26**, the staff will drive the students in the morning, to **GROSSETO Railway Station**, where they could take trains to their departure place or any further destination.

If students arrive in any other town or leave from any other place, they will have to provide themselves a ride to or from **Pitigliano** (where they will be picked up by our staff) as well as they don't respect the arrival and departure dates.



### **Accommodations**

Students and staff will be housed in the typical country house near the archaeological site, in dormitories for 6-8 places each, with communal bathrooms and facilities.

The school house address is:

**Catabbiaccio, 58055 Semproniano GR**

### **Meals**

The breakfast (consisting of coffee, milk, tea or cappuccino and pastries) will be consumed at the accommodation.

**On Saturdays no dinner will be provided by staff.**

**On Sunday no lunch will be provided by staff.**

Lunch and dinner, consisting of typical Italian dishes, will be held at the accommodation (International School fee only includes water; all other drinks are not included).





Every effort will be made to accommodate students with food allergies (nuts, shellfish, etc.); students with food allergies are required to inform the staff of their specific dietary restrictions upon application. We also will try to accommodate individual lifestyles and dietary choices (e.g. vegetarianism) too: student must inform the staff of any special request upon application, **no special dietary request after application will be taken in consideration.**

On request, it will be possible to go shopping every 3/4 days; students may ask staff members for any personal shopping request (not included in the fee).

### **Health and medical information**

The participation in the Summer School implies intense physical activity and probably high temperatures (**up to 104 °F - 40 °C**) during the workday. It is mandatory that all students consult their family doctor to confirm that they will be able to endure the demands of working outdoors for several hours.

All students accepted in the program will be required to provide a doctor's note stating that they are in good health and able to participate in the field school safely. In case of students with medical conditions and/or special needs, a specialist's note will be required. In order to guarantee safety and proper intervention in case of emergency, medical history information must be included in the physician's note. Such information will be treated with absolute confidentiality and will not be disclosed to any third party, unless required to safeguard the student's health.

All the students enrolled in the field school **must have a valid international medical insurance for the entire duration of their stay in Italy.** Students are required to provide policy information prior to their arrival in Italy.

Given the potential exposure to pathogens in the soil, students must have had a tetanus vaccination or booster within the past ten years; no other vaccinations are required to travel in Italy.

### **Local Transports**

The staff will drive the students, materials, and supplies to and from the site on every workday, during cultural trips, and in case of emergency as well. Staff will try to grant students' wish of special trips, when free from activities.

### **Clothing and Equipment**

Students should plan to bring appropriate clothing for summertime, providing the following items specifically for the field work:

- comfortable, lightweight pants (no shorts allowed on the site) and shirts to be worn during excavation (shirts with shoulders and sleeves are preferable to tank tops);
- closed-toe work shoes with reinforced soles (no trainers, sandals or flip flops are allowed on the site);
- comfortable work gloves;
- a hat to protect the head during the hottest hours of the day;
- backpack;
- sunscreen and insect repellent;
- a flask or water bottle.

The following items are required for the accommodations:

- sheet set (top and bottom sheet, standard pillow slip) OR a sleeping bag;
- shower and hand towels;
- personal toiletries;
- any personal medicine;
- swimsuit and beach towel;
- basic school supplies.

### **Language**

The official language of the field school is English and no knowledge of Italian is required. However, Italian or French knowledge will be taken as an advantage.

### **Visas**



No Euro zone citizens are required to carry a valid passport for at least six months following the date of their arrival in Italy. No visa is required to enter the country for a stay shorter than 90 days. All students are highly encouraged to read and review information relevant to traveling to Italy posted on the their government Foreign Office site (e.g. [US Department of State's website](#)).

### Internet access

Internet access will be available at the accommodation, using staff devices upon request, at no additional cost.

There is WI-FI connection JUST in the refectory.

Personal computers and internet connections will be allowed.

**For normal internet connections, students are encouraged to purchase a data plan with an Italian mobile operator upon arrival at the airport.**

### Laundry

Laundry service is not included. Students should do their own washing (detergents will be supplied by the staff). They can also find some launderettes in the near town of Pitigliano.

### Currency and personal shopping

Every cash purchase has to be in Euros.

Up-to-date data about Euro-US dollar exchange can be easily found online. Students will not incur in any additional fee for the duration of the field school, but they may want to purchase souvenirs, gifts and other personal items. Although major credit cards are widely accepted, a modest sum in cash may be useful. Money may be exchanged at local banks and exchange agencies, or simply withdrawn at local ATMs.

### Mobile devices

We strongly recommend you to buy an Italian or International SIM card **before** your arrival at Sorano. Good phone or data offers are harder to find in the countryside than in the airports, where salespeople are more accustomed to helping foreign customers.



**We are looking forward to meeting you in Tuscany!!!**

