

B.I.S.A.  
«La Biagiola»  
International school of  
Archaeology

Campaign 2024

«THE STONE AND  
THE RIVER»  
SURVEY PROJECT

MAY 5<sup>TH</sup> –19<sup>TH</sup> (TWO SHIFTS)

SORANO, GROSSETO, TUSCANY, ITALY

INFO & CONTACT:

[HTTPS://WWW.CULTURATERRITORIO.ORG/](https://www.culturaterritorio.org/)

[INFO@CULTURATERRITORIO.ORG](mailto:INFO@CULTURATERRITORIO.ORG)





## ***In short***

**WHO?** ARCHAEOLOGY, HISTORY, ART HISTORY, ANTHROPOLOGY, AND MUSEOLOGY STUDENTS.

**WHAT?** AN INTERNATIONAL SUMMER SCHOOL OF ARCHAEOLOGY.

**WHEN?** FROM MAY 5<sup>TH</sup> TO MAY 19<sup>TH</sup>, DIVIDED IN TWO SHIFTS OF ONE WEEK EACH.

**WHERE?** SORANO, TUSCANY, ITALY.

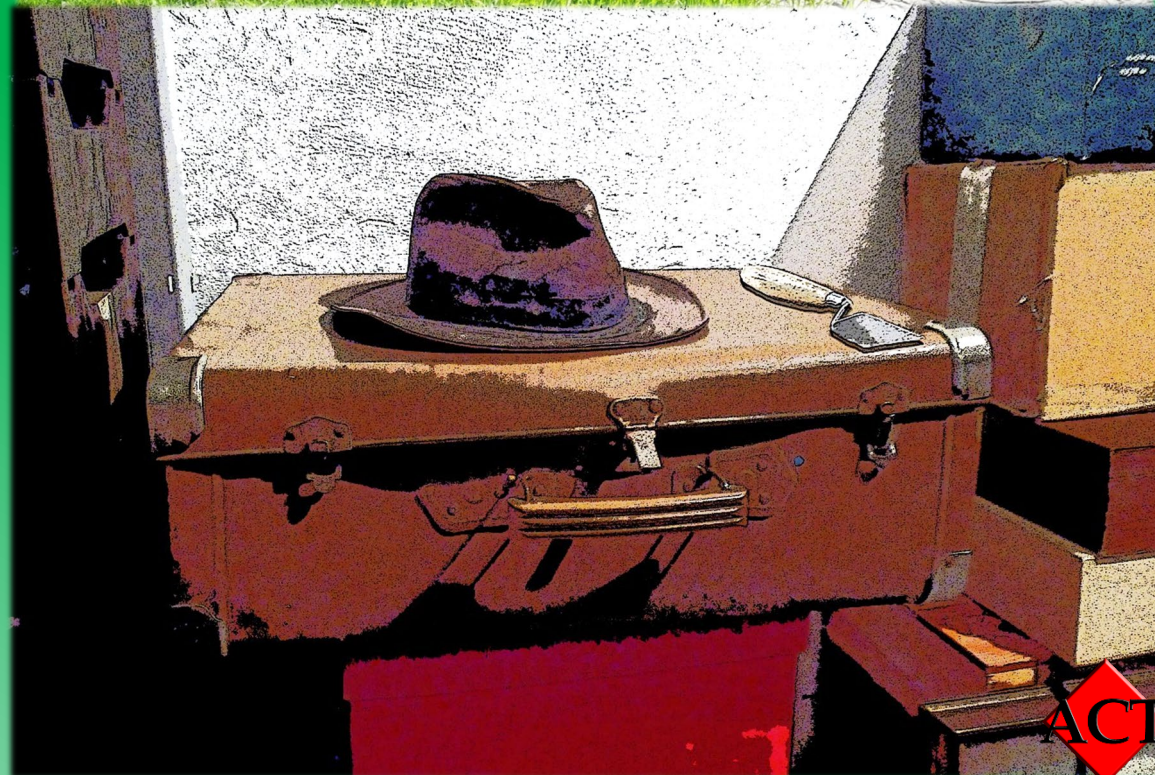
**WHY?** TO LEARN THE LANDSCAPE ARCHAEOLOGY APPROACHES IN A REGION RICH IN HISTORY AND CULTURE, BEING PART OF A STIMULATING INTERNATIONAL ENVIRONMENT.

**HOW?** READ MORE IN THIS DOSSIER, THEN SEND US YOUR CV, A COVER LETTER, AND THE FORM THAT YOU CAN DOWNLOAD FROM OUR [WEBSITE](#).

FOR MORE INFORMATION, YOU CAN CONTACT US

[INFO@CULTURATERRITORIO.ORG](mailto:INFO@CULTURATERRITORIO.ORG)

**WHAT ARE YOU WAITING FOR? PACK YOUR BAGS AND JOIN US!**







## ***“The Stone and the River” project***

Human settlement in the region is closely related to the river and the rocky landscape features.

The project consists in the diachronic investigation of this relationship, through the study of the traces that man has left in the rock over time: building (castles, churches, villas, sanctuaries, and hamlets) and carving (necropolis, hermitages, canals, and roads).

Furthermore, using the most modern technologies, and photogrammetric surveys, three-dimensional models of the most significant sites will be created.





## ***Fancy an archaeological campaign in Tuscany?***

- We provide an exciting opportunity for a first-hand experience in a landscape archaeology study, on a region which history spans from prehistory to Middle Ages.
- You'll take part in the archaeological survey, working alongside expert archaeologists and foreign fellow students.
- You'll learn the latest digital technologies in architectural survey, simultaneous localization and mapping (SLAM), vSLAM 3D photogrammetry, and 3D rendering, right on the field.
- This program is offered in collaboration with the Cultural Heritage Office of Tuscany, the regional authority that manages archaeological sites and monuments.
- In addition to the archaeological experience, you will be able to enjoy a wide range of cultural sites, historic monuments, and natural sites of Tuscany.
- B.I.S.A. program is open to all students of archaeology, anthropology, and related disciplines.



#ARCHEOLOGY, #CLASSICAL STUDIES, #DIGITAL HUMANITIES, #MEDIEVAL STUDIES, #PHOTOGRAMMETRY, #SLAM, #QGIS, #STANDING BUILDING ARCHAEOLOGY, #PUBLIC ARCHAEOLOGY, #ANTHROPOLOGY, #PREHISTORY, #PROTOHISTORY, #ETRUSCANS, #ROMANS, #MIDDLE AGES, #CERAMICS, #METALLURGY, #STANDING BUILDING ARCHAEOLOGY, #ARCHITECTURAL SURVEY, #TOPOGRAPHICAL SURVEY, #RECONNAISSANCE, #ARCHAEOMETRY, #LABORATORY.



## ***The 2024 campaign***

After the remarkable outcomes of the previous archaeological survey campaigns, we are ready to sum up and teach our students the latest tricks and applications of modern digital reconstructions (Agisoft Metashape) and open-source Geographic Information Systems (QGIS).

Moreover, coursework will explore and focus on the major features of ancient Etruscan, Roman and Early-Medieval cultures.

The aims of the 2024 Campaign are to:

- carry out the archaeological survey of the middle Fiora valley;
- census and survey of necropolis, castles, road traces, hamlets, and rock shelters;
- digital rendering of the most important sites, integrating vSLAM photogrammetric and LIDAR SLAM techniques;
- thanks to the collaboration with the Parco la Città del Tufo, we will also have the opportunity to excavate a splendid section of the archaic necropolis of the Via Cava di San Sebastiano.

The program will be beneficial for both Classical and Medieval archaeologists.





## ***Field activities***

The on-field activities of survey, photogrammetry and census will be a major portion of the training focus for the participants.

The trainees will be guided through this new adventure by a team of skillful archaeologists who will explain clearly every aspect of the research process.



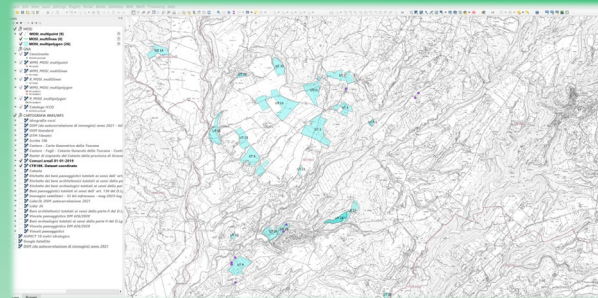


# Lab activities

Laboratories will run parallel to field activities, involving small groups of students at a time, under the supervision of a staff instructor.

Training in drawing, pottery, vSLAM, S.L.A.M., G.I.S., and open source archaeological record labs will be provided.

In addition, depending on the needs of the field research, the laboratories will also focus on other topics, such as Archaeology of standing buildings, metal find preservation, and anthropological analysis.





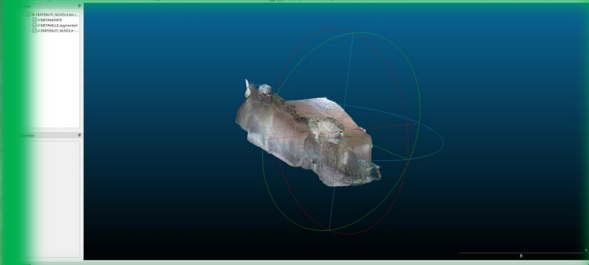
# ***Didactics***

Lectures will be focused on archaeological method and theory applied to the case study of the middle Fiera river valley

They will take place after fieldwork, interposed to cultural trips.

Topics:

- public archeology;
- survey and other non-invasive techniques;
- the archaeological context of the region;
- light Archaeology;
- landscape archaeology;
- findings treatment and analysis;
- archaeology of death;
- standing building archaeology;
- ancient building techniques;
- oil and wine in Roman period;
- archaeometry;
- digital archaeology.





# Timetable

Activity	1-week shift, hours
Survey (field activities)	30
Lab activities	10
Lectures, cultural trips	8
<b>Total work hours</b>	<b>48</b>

The field activity will take place from Monday to Wednesday, followed by a day entirely dedicated to lectures on Thursday. On Friday, we will return to the field, while Saturday morning will be devoted to cultural excursions in the surroundings. Activities will be subject to weather conditions, and in case of bad weather, laboratory work and museum visits will be prioritized. Sunday will be dedicated to logistical arrangements for departures and arrivals and will be free. Participants will be responsible for the Saturday dinner and Sunday lunch arrangement and expenses.



Weekday schedule		
Time	Activity	Location
7.00	Breakfast	At home
8.30	Arrive on site/start lab activity at home	At home/on site
8.30	Daily briefing	At home/on site
8.30-10.30	Survey/lab activities	At home/on site
10.30-10.45	Break	At home/on site
10.45-12.30	Survey/lab activities	At home/on site
12.30-13.00	Lunch	At home/on site
13.00-15.00	Survey/lab activities	At home/on site
15.30-17.30	Classes/lab activities	At home
17.30-20.00	Free time	At home
20.00-...	Dinner and free time	At home
Thursday schedule		
8.00 am	Breakfast	At home
8.00-13.00	Didactics/cultural trip	At home/on site
13.00-14.00	Lunch	At home/on site
14.00-17.00	Didactics/cultural trip	At home/on site
17.30-20.00	Free time	At home
20.00-...	Dinner and free time	At home
Saturday schedule		
8.00 am	Breakfast	At home
8.00-13.00	Cultural trip	At home/on site
13.00-14.00	Lunch	At home/on site
14.00-17.00	Free Time	At home/on site
17.30-20.00	Free time	At home
20.00-...	Dinner and free time	At home

Drawing, G.I.S., digital archaeology will be held regularly in parallel with fieldwork.



# *Leisure*

In addition to the archaeological experience, participants will be able to enjoy a wide range of cultural sites, historic monuments, and natural sites of Tuscany.

Since the site is in the middle of a rich archaeological area, several cultural excursions in the surroundings are planned, such as the Etruscan necropolis of Sovana, the impressive vie cave, Sorano and the Pitigliano museums and castles.

Not to mention the various leisure activities that are also included: Bolsena Lake, Saturnia baths, and the numerous festivals will make the experience enjoyable and unforgettable.





# ***A ccommodation***

Accommodations: students will be accommodated in a modern facility in the Tuscan countryside, in triple-bed rooms with private bathrooms, close to the premises where communal activities and teaching will take place.

The schoolhouse address is: Montebuono, 58010 Sorano GR



**Groups with more than 15 students**



**Groups of 3 or fewer students**



**Groups of 15 or fewer students**





# ***Rules and tips - I***

## **Arrival and departure**

Students are responsible for arranging their own travel to and from Italy. The School is taking place in the municipality of Sorano (GR), in the south of Tuscany.

The closest airport is in Rome. We suggest the students to reach Rome by flight, take a train to GROSSETO, and a bus to PITIGLIANO. Personnel are authorized to transport to and from the Pitigliano bus station.

On Sundays, a meeting point will be arranged at PITIGLIANO Bus Station in the late morning for the applies. Students will be driven to the School accommodation by the staff. A second meeting point could be arranged in the first afternoon.

On Sundays, the staff will drive the students, in the morning, to PITIGLIANO Bus Station, where they could take buses to their departure place or any further destination.

## **Visas**

No Euro zone citizens are required to carry a passport valid for at least six months following the date of their arrival in Italy. No visa is required to enter the country for a stay shorter than 90 days. All students are highly encouraged to read and review information relevant to traveling to Italy posted on their government Foreign Office site (e.g. US Department of State's website).

## **Meals**

The breakfast (consisting of coffee, milk, tea or cappuccino, and pastries) will be consumed at the accommodation.

On Saturdays no dinner will be provided by staff.

On Sundays no lunch will be provided by staff.

Lunch and dinner, consisting of typical Italian dishes, will be held at the accommodation (International School fee only includes water; all other drinks are not included).

Every effort will be made to accommodate students with food allergies (nuts, shellfish, etc.); students with food allergies are required to inform the staff of their specific dietary restrictions upon application. We also will try to accommodate individual lifestyles and dietary choices (e.g. vegetarianism) too: student must inform the staff of any special request upon application, **no special dietary request after application will be taken in consideration.**

On request, students may ask staff members for any personal shopping (not included in the fee).

## **Internet access**

Internet access will be available at the accommodation, using staff devices upon request, at no additional cost.

There is WI-FI connection JUST in the refectory AND in the rooms.

Personal computers and internet connections will be allowed.

**For normal internet connections, students are encouraged to purchase a data plan with an Italian mobile operator upon arrival at the airport.**

## **Laundry**

Laundry service is not included. Students should do their own washing (detergents will be supplied by the staff). They can also find some launderettes in the near town of Pitigliano.

## **Currency and personal shopping**

Every cash purchase must be in Euros.

Up-to-date data about Euro-US dollar exchange can be easily found online. Students will not incur in any additional fee for the duration of the field school, but they may want to purchase souvenirs, gifts and other personal items. Although major credit cards are widely accepted, a modest sum in cash may be useful. Money may be exchanged at local banks and exchange agencies, or simply withdrawn at local ATMs.

## **Mobile devices**

We strongly recommend you buy an Italian or International SIM card **before** your arrival at Sorano. Good call or data offers are harder to find in the countryside than in the airports, where salespeople are more accustomed to helping foreign customers.



# ***Rules and tips - 2***

## **Safety first!**

All students will be equipped with appropriate safety devices. The activities and cultural trips will be conducted in compliance with the higher safety standards.

All ACT's activities follow the rules prescribed by the Legislative Decree no. 81 of 9 April 2008, also known as "*Testo unico in materia di salute e sicurezza sul lavoro*", and the related corrective measures, according with the Cultural heritage office of Tuscany's dispositions.

## **Health and medical information**

The participation in the School implies intense physical activity during the workday. It is mandatory that all students consult their family doctor to confirm that they will be able to endure the demands of working outdoors for several hours.

All students accepted in the program will be required to provide a doctor's note stating that they are in good health and able to participate in the field school safely. In case of students with medical conditions and/or special needs, a specialist's note will be required. In order to guarantee safety and proper intervention in case of emergency, medical history information must be included in the physician's note. Such information will be treated with absolute confidentiality and will not be disclosed to any third party, unless required to safeguard the student's health.

All the students enrolled in the field school **must have a valid international medical insurance for the entire duration of their stay in Italy**. Students are required to provide policy information prior to their arrival in Italy.

Given the potential exposure to pathogens in the soil, students must have had a tetanus vaccination or booster within the past ten years; no other vaccinations are required to travel in Italy.

## **Local Transports**

The staff will drive the students, materials, and supplies to and from the site on every workday, during cultural trips, and in case of emergency as well. Staff will try to grant students' wish of special trips, when free from activities.

## **Clothing and Equipment**

Students should plan to bring appropriate clothing for spring weather, providing the following items specifically for the field work:

- comfortable, waterproof long pants (no shorts allowed in the field) and shirts to be worn during field work;
- trekking shoes;
- comfortable work gloves;
- a hat;
- backpack;
- sunscreen and insect repellent;
- a flask or water bottle.

The following items are required for the accommodations:

- sleeping bag;
- shower and hand towels;
- personal toiletries;
- any personal medicine;
- basic school supplies.

## **Language**

The official language of the field school is English, and no knowledge of Italian is required. However, Italian or French knowledge will be taken as an advantage.



# *Join us!*

## **Admission procedures**

The Spring Masterclass is open to both undergraduate and graduate students in Archaeology.

Admission is limited to 3 students per shift. No prerequisites are requested for the School; students will be adequately trained during the campaign.

Students interested in the International School must submit their application with a cover letter (1000 characters max) and a CV to [info@culturaterritorio.org](mailto:info@culturaterritorio.org).

You can find the application form at [www.culturaterritorio.org](http://www.culturaterritorio.org).

Minimum stay: **applicants must attend at list one shift (7 days)**.

## **Application deadlines:**

**15/04/2024.**The staff reserves the right to verify any information reported in the CV and to request additional documentation (e.g.: advising reports; references) at its discretion, before coming to a decision on the enrollment.

An e-mail of confirmation or refusal will be sent to each applicant.

Upon acceptance, students will receive detailed information on the following enrollment requirements:

1. Medical certificate of good mental and physical health and medical history – if students have medical conditions, the certificate should be filled out and signed by a treating specialist.
2. Proof of Insurance – **students must have a valid international health and injury insurance and must provide the insurance provider's contact information as well as the policy number.**
3. Release form – the participant must read and accept the terms of the field school; a signed release form must be submitted before the starting date of the School.
4. Payment, to be made through credit transfer. 50% of the payment will be requested within 1 week after acceptance. Balance should be paid upon arrival at the School.

Students will be required to provide all documentation and the 50% deposit within one week from acceptance. The failure to provide all above-mentioned documents and payment within the terms means an automatic forfeiture of the student's place in the School.

For any further question, please e-mail our director Dr Luca Mario Nejrotti at [presidente@culturaterritorio.org](mailto:presidente@culturaterritorio.org). Or look for further information at [www.culturaterritorio.org](http://www.culturaterritorio.org).





# ***Fees and academic credits***

**Special rates will be applied to students from affiliated universities.**

**Whole campaign fee: € 1800.**

**AIA Member: € 1620.**

**Participants for a 1-week session: € 900.**

AIA Members and students from partner institutions will get a 10% reduction.

Fees will cover local transports, housing, meals, excavation, laboratory equipment, and staff costs; anything not specified is not included.

There are no application fees; however, students are required to pay half support fees within 1 week after admission.

Travel to and from Pitigliano is not included.

In case of withdrawal up to one weeks before the start of the International School, the fee will be refunded minus a non-refundable deposit of **€ 225**.

After this term, fees will not be refunded.

## **Payment method**

Money transfer to our bank account.

Associazione "Cultura e Territorio"

Via Baretto, 125 – 10125 Torino

C.F. 97687910014

IBAN: IT23R0321101001052848844830

Bank name: Banca Patrimoni Sella and C. S.p.A.

BIC: SELBIT22

SWIFT: SENVIT1XXX

Town: Torino, Piemonte, Italia

You can pay just the first 50% of the amount OR the whole amount plus any costs for the money transfer.

In case you choose to pay just half fee you should be able to pay the balance upon arrival, in cash.

You can also send money by PayPal to our account ([presidente@culturaterritorio.org](mailto:presidente@culturaterritorio.org)), but only **in form of a friendly donation not as a purchase**.

## **Credits**

In order to enable students to gain credits from their University, a signed certificate will be issued, testifying all the activities of the School in details.





## ***More about***

### **TO KNOW MORE, LOOK AT THESE VIDEOS (SUBTITLED):**

<http://www.youtube.com/watch?v=KHCioAuDfI0>;

[http://www.youtube.com/watch?v=fVdK-ACcuE&list=PLK1\\_iz-oV1WjmG7mcRd-elTCMiRH1J--g](http://www.youtube.com/watch?v=fVdK-ACcuE&list=PLK1_iz-oV1WjmG7mcRd-elTCMiRH1J--g) ;

<https://www.youtube.com/watch?v=XEPgmL-mkXE>;

[https://www.youtube.com/watch?v=GX0eS\\_YS\\_lw](https://www.youtube.com/watch?v=GX0eS_YS_lw).

### **BIBLIOGRAPHY**

BARBIERI G., BUCCI I., DICIOTTI F., FERRARESE LUPI A., 2011, SORANO (GR) LOCALITÀ LA BIAGIOLA: SAGGIO DI SCAVO, IN NOTIZIE DEL “NOTIZIARIO DELLA SOPRINTENDENZA PER I BENI ARCHEOLOGICI DELLA TOSCANA”, 6.

FERRARESE LUPI A., 2011, LOCALITÀ LA BIAGIOLA: RELAZIONE PRELIMINARE DI SCAVO (CAMPAGNE 2009-2010), IN BARBIERI G., IL TERRITORIO DI SOVANA. UN DECENNIO DI RICOGNIZIONI E INDAGINI ARCHEOLOGICHE, PP. 83-92.

TURCHETTI M. A., DICIOTTI F., CORSI J., NEJROTTI L., FERRARESE LUPI A., 2012, SORANO (GR). INDAGINI ARCHEOLOGICHE NEL SITO DELLA BIAGIOLA: CAMPAGNA DI SCAVO 2011, IN “NOTIZIARIO DELLA SOPRINTENDENZA PER I BENI ARCHEOLOGICI DELLA TOSCANA”, 7.

FERRARESE LUPI A., NEJROTTI L. M., TURCHETTI M. A., 2013, INDAGINI ARCHEOLOGICHE NEL SITO DELLA BIAGIOLA CAMPAGNA 2012, IN NOTIZIE DEL “NOTIZIARIO DELLA SOPRINTENDENZA PER I BENI ARCHEOLOGICI DELLA TOSCANA”, 8, 2012, PP. 618-621.

NEJROTTI L. M., TURCHETTI M. A., 2014, INDAGINI ARCHEOLOGICHE NEL SITO DELLA BIAGIOLA CAMPAGNA 2013, IN NOTIZIE DEL “NOTIZIARIO DELLA SOPRINTENDENZA PER I BENI ARCHEOLOGICI DELLA TOSCANA”, 9, 2013, PP. 518-519.

NEJROTTI L. M., BUCCI I., TURCHETTI M. A., 2015, INDAGINI ARCHEOLOGICHE NEL SITO DELLA BIAGIOLA CAMPAGNA 2014, IN NOTIZIE DEL “NOTIZIARIO DELLA SOPRINTENDENZA PER I BENI ARCHEOLOGICI DELLA TOSCANA”, 10, 2014, PP. 528-530.

[Http://www.Fastionline.Org/excavation/micro\\_view.Php?fst\\_cd=aiac\\_4355&curcol=sea\\_cd-aiac\\_8781](Http://www.Fastionline.Org/excavation/micro_view.Php?fst_cd=aiac_4355&curcol=sea_cd-aiac_8781).



# Join our international community!!!

We know how much important it is to compare different scientific methods and to connect with people from different backgrounds. Over the years we have been able to create relationships that go beyond the simple duration of the campaign and still last today.



**Please note that B.I.S.A. mascot is a very good big dog: people allergic or particularly afraid of dogs should choose another school.**

