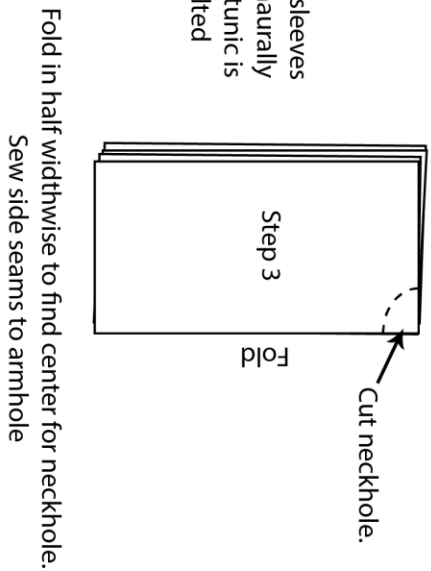
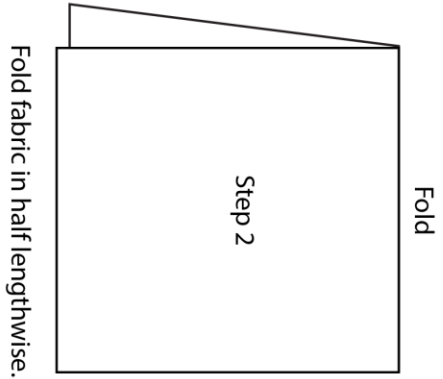
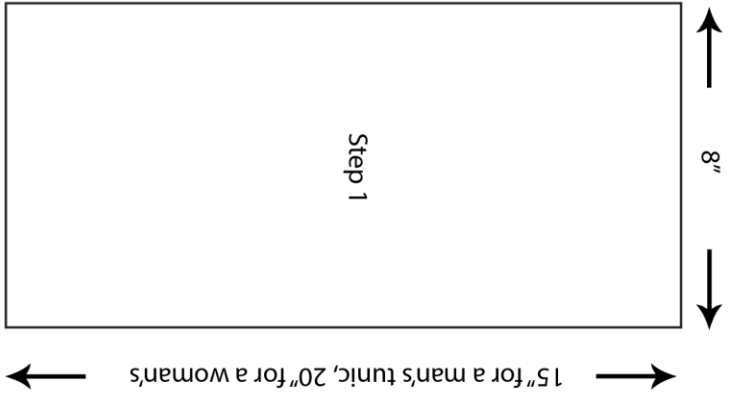
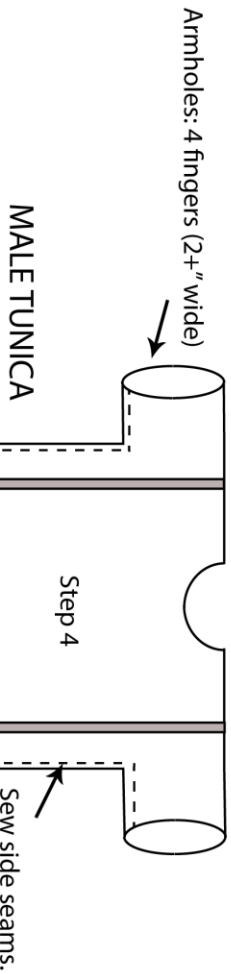


BASIC TUNIC

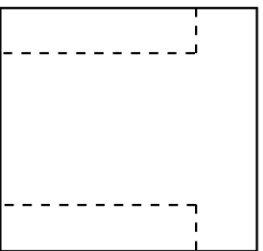
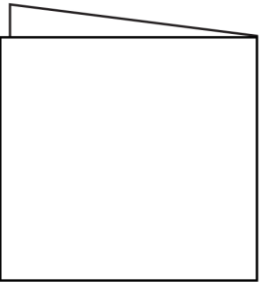


Loose sleeves form naturally when tunic is belted



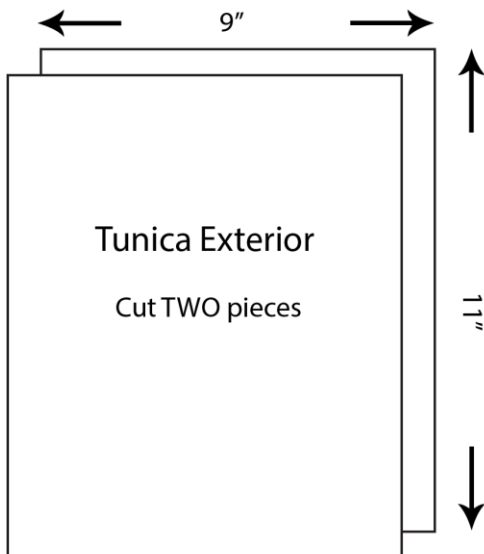
For clavi on a male tunic, cut ribbon to 15" length, fold over shoulder and apply with glue.

WITH SLEEVES: Cut fabric 2 to 3 inches wider and cut in "T" shape for sleeves.

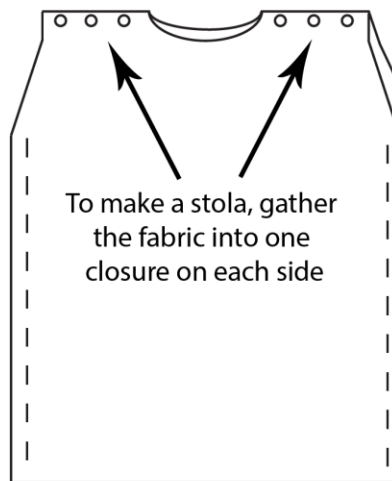


Sleeveless Tunica Exterior or Stola

Toga and Palla



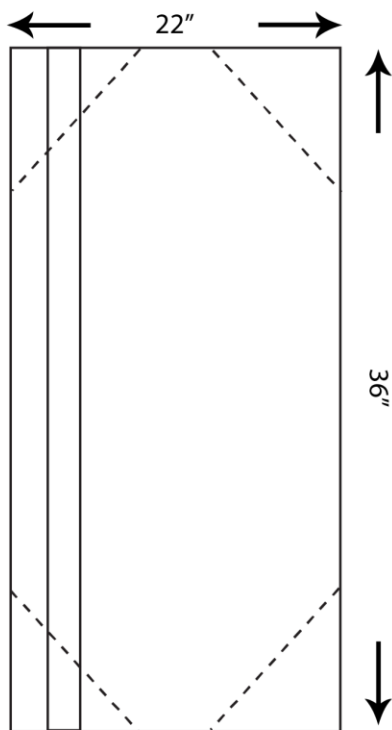
Sew back and front together with gathering stitch or connect with buttons and beads.



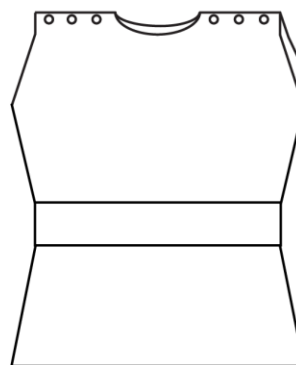
Sew side seams allowing for armholes.

TOGA

Cut corners at angles or curves.



OPTION: Hold front and back together by belting and "blousing."



Turn right side out and put on doll. Belt with cording and "blouse" to fall above knees.

PALLA

Long rectangle of soft, draping fabric 8-10" wide and 18" - 22" long.