

JULY 2020

ARCHAEOLOGY FIELD SCHOOL

**EXPERIENCE EXCAVATING
2200-YEAR-OLD ETRUSCAN TOMBS**

TUSCANIA, ITALY

Photo credits

Cover page and page 6: Photo Simone Stanislai



Archaeology Field School, July 2019

Discovering the Etruscan "Cities of the Dead"



Top: Archaeologist exploring a tunnel in a tomb. Bottom left: Three stone sarcophagi inside a tomb near Tuscania, 3rd - 2nd cent. Bottom right: An unviolated tomb with multiple graves with their goods and human remains, 3rd - 2nd cent. BC.

INTRODUCTION

Istituto Lorenzo de' Medici and CAMNES run a four-week intensive Archaeology Field School under the direction of a team of professional archaeologists.

This program gives the opportunity to learn and work in a real excavation environment while gaining an understanding of ancient Etruscan culture and archaeological methods. In previous sessions of the Field School students have uncovered important archaeological finds such as a mirror decorated with gods, now exhibited at the National Museum of Tuscania.

Students play an active role in the excavation of the Etruscan necropolises, the cities of the dead, near Tuscania. Through field trips and by examining the abundance of materials found in this region, students learn about the lives of the ancient Etruscans from archaeological evidence and literary sources.

This program is an exciting and unique opportunity for a firsthand look at archaeological fieldwork and a new approach in understanding ancient civilizations.

THE SITE

The archaeological area of Tuscania is composed by necropolises distributed throughout the modern town, which is believed to be an ancient settlement. LdM started to investigate two newly discovered “cities of the dead”, Pian delle Rusciare and Podere Pratino in 2005, with the recent support of CAMNES.

Both necropolises are from the 3rd-2nd century BC and have hypogeum tombs. In these underground environments, Etruscans buried their dead and deposited their belongings when celebrating funerary rituals. Many tombs had been violated over the years; however several have been left intact revealing an incredible number of ancient artifacts. One tomb held 47 graves with a total of 450 objects that LdM students and CAMNES are currently restoring in the ‘Archaeology Workshop’ course in Florence.

FURTHER DETAILS

The LdM-CAMNES archaeological field school is an incredible journey in an inspiring environment. This program gives the possibility to dig and uncover 2200 year old artifacts and structures of the Etruscan civilization, while interacting with Italian participants, and enjoying the breathtaking countryside. Participants stay in Tuscania and absorb the atmosphere of this ancient Medieval town situated in the heart of ancient Etruria.

During the stay participants have the opportunity to visit, together with their instructors, the most important sites of Etruscan interest and the nearby area. Weekends are a perfect chance to explore the countryside and discover the castles, towns and the amazing aspects of this region, including the warm Mediterranean seaside just over 30 minutes away or the Bolsena Lake just 18 minutes away.





TOMBA 21 / TOMB 21

LOCULUS IV / LOCULUS IV

- 1 Ansa. Bronzo / Handle. Bronze.
- 2 Coppa. Ceramica a vernice nera / Cup. Black gloss ceramic.
- 3 Piattini. Ceramica a vernice nera / Plates. Black gloss ceramic.
- 4 Lagynos (brocca da vino). Ceramica acroma / Wine jug. Common ware.
- 5A. Olla. Ceramica acroma / Small pots. Common ware.

LOCULUS XIV / LOCULUS XIV

- 9. Olla omerina. Ceramica acroma / Pot (on). Common ware.
- 10-12. Olette. Ceramica acroma / Small pots. Common ware.

CAMMINAMENTO DAVANTI AL LOCULUS XIV /

INNER CORRIDOR IN FRONT OF LOCULUS XIV

- 13. Olla omerina con coperchio. Ceramica acroma / Pot (on) with lid. Common ware.
- 14. Brocca. Ceramica acroma / Jug. Common ware.
- 15. Lagynos (brocca da vino). Ceramica acroma / Wine jug. Common ware.
- 16. Unguentario. Ceramica acroma / Balm jar. Common ware.



*Etruscan artifacts found by CAMNES-
LdM students on display for the exhibition
Reflections of a Society, Florence, 2017*

GENERAL INFORMATION

Duration:

Arrival Thursday July 2nd, 2020

Departure Thursday July 30th, 2020

Location:

Podere Pratino, Tuscania (VT) LdM Tuscania, Italy.

TUITION

See separate price list on website

Prerequisites and Requirements:

- An up-to-date tetanus inoculation
- International Medical/travel insurance
- It is of paramount importance that every participant communicates to the enrollment offices any allergies, food intolerances or any kind of medical issues upon enrollment.
- No prerequisites and no experience of archaeology or knowledge of Italian are needed. The principal qualifications include a strong academic record, a desire to learn more about archaeology and the Etruscan civilization, and an enthusiasm to dig.
- Participants must bear in mind that the archaeological field school of Tuscania is a full-time workshop within a professional archaeological research project that includes a five day per week involvement including lessons, archaeological field activities and visits. Participants have Saturdays and Sundays off.
- The schedule includes a lot of fieldwork and walking during field trips. While at the archaeological site, fieldwork requires digging, stooping, bending and exposure to sun, wind and/or rain. This field school is not recommended to participants with allergies to sun and/or dust.

OUTLINE OF SCHEDULE

In the first part of the course, participants take classes that introduce them to the civilization of the ancient Etruscans as well as to basic archaeological theory and practice. Students also visit a number of local Etruscan sites and have field trips to some world famous Etruscan sites, such as Tarquinia, Cerveteri, Tuscania and the Archaeology Museum of Villa Giulia in Rome. During the final three weeks of the course students participate in the excavation of important Etruscan burial sites, it is therefore requested full cooperation and hard fieldwork labour. Participants must bear in mind that working days go from Mondays to Fridays.

EQUIPMENT AND MATERIALS

Participants are responsible for proper usage and storage of their assigned tools and materials. Each participant is required to personally provide the following equipment, necessary to work on the archaeological dig:

- Simple, comfortable clothing for working in hot weather
- Safety-shoes (i.e. with a steel toe)
- Good-quality 100% cotton hat
- Strong sunscreen
- Bug spray
- An A4 size note-book to be used as an activity Journal.

Participants must bear in mind that all above-mentioned equipment and materials are MANDATORY and must be brought from home. If participants are found devoid of any of these items, the director of the project may deny excavation access.

Further details will be given during the first class.

Participants will be provided with necessary work and study materials, covered by the tuition.

TUITION AND APPLICATION

Prospective applicants must contact LdM for further details about the program and how to apply.

A maximum of 20 participants are accepted, with preference given to early applicants.



DEADLINE FOR APPLICATIONS

May 15th, 2020

The Tuition Fee includes:

- The entire course for a minimum of 148 contact hours and 6 credits (no additional registration fees required)
- Transfer from Rome International Airport 'Leonardo da Vinci' to Tuscania and back
- Accommodation in a hotel or B&B, double room with private bathroom (triple rooms will be assigned in case of odd student numbers)
- Weekday breakfast at the hotel, B&B, or at a Café
- Weekday lunch at the excavation
- Travel connected with course related activities
- Scheduled museum entries
- Social and cultural events organized by the institute

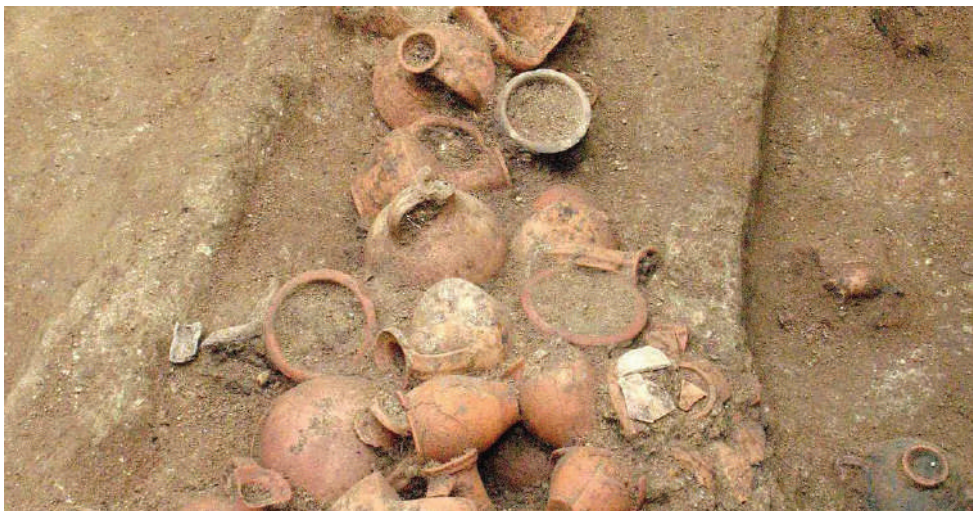
The Tuition Fee does NOT include:

- Meals other than scheduled (i.e. dinner, weekend meals, etc)
- Beverages (to be paid on-site)
- Required personal materials (to be brought from home)

Further details and suggestions about expenses will be given during enrollment and first classes.

TO ENROLL

See contact address or web site links on the last page.



SUGGESTED READINGS

- Etruscan Studies: Journal of the Etruscan Foundation 1994-2010 (available online at: http://scholarworks.umass.edu/etruscan_studies/)
- Rasenna: Journal of the Center for Etruscan Studies 2007; 2009 (available online at: <http://scholarworks.umass.edu/rasenna/>)
- S. Haynes, Etruscan Civilization. A Cultural History, Oxford (Oxford University Press) 2005.
- G. Camporeale et alii, The Etruscans outside Etruria, Los Angeles 2004.
- M. Torelli, The Etruscans, New York 2001.
- M. Sprenger, G. Bartoloni, The Etruscans. Their History, Art, Architecture, New York 1983.
- Stephan Steingräber, New Discoveries and Research in the Field of Southern Etruscan Rock Tombs, in Etruscan Studies: Journal of the Etruscan Foundation, VOLUME 3 - 1996, p. 75.
- G. Camporeale, S. Giuntoli, Il parco archeologico dell'Accesa a Massa Marittima (English version), Follonica 2000.
- T. F. Borrelli and M.L. Targia. The Etruscans. Art, History, Architecture - British Museum press.
- C. Renfrew and P. G. Bahn, Archaeology. Theories, Methods and Practice, London (Thames and Hudson), 2004.
- B. C. Trigger, A History of Archaeological Thought, Cambridge (Cambridge University Press), 2005.
- K. Greene, Archaeology: An Introduction, London and New York (Routledge), 2002.

CONTACT DETAILS

Further details of the on-going and other archaeological projects of CAMNES and LdM are available at:

www.camnes.org

www.ldminstitute.com

CONTACT

***LdM ITALY MAIN OFFICE
FLORENCE, ROME AND TUSCANIA***

Via Faenza, 43

50123 Florence, Italy

Phone: +39.055.287.360

Phone: +39.055.287.203

Fax: +39.055.239.8920

info@ldminstitute.com

***LdM ACADEMIC RELATIONS
AND STUDENT SERVICES***

3600 Bee Caves Road, Suite 205B

AUSTIN, TX 78746 U.S.A.

Phone: +1.877.765.4LDM (4536)

Phone: +1.512.328.INFO (4636)

Fax: +1.512.328.4638

info@ldminstitute.com



LdM

The Italian
International
Institute

Lorenzo de' Medici

WWW.LDMINSTITUTE.COM



Istituto Lorenzo
de' Medici



@Istituto_LdM



LDM NEWS



Istituto Lorenzo
de' Medici



@Istituto_LdM