



## Archaeological Field School 2020

### THE SITE

The archaeological field school will be located at Bremer Mills Estate, an 1880s industrial heritage site near Ipswich, Queensland.

### DATES

29 June - 03 July 2020  
06 July - 10 July 2020  
13 July - 17 July 2020

### COST

\$890 AUD per person (incl. GST)  
Includes expert guidance, equipment,  
lunch and morning/afternoon tea.  
To secure your place, a deposit of \$300  
is required by 29 May 2020. Balance is  
due 2 weeks prior to commencement of  
chosen field school.



Register your interest by 20 March at  
[www.everickfoundation/field-school](http://www.everickfoundation/field-school)

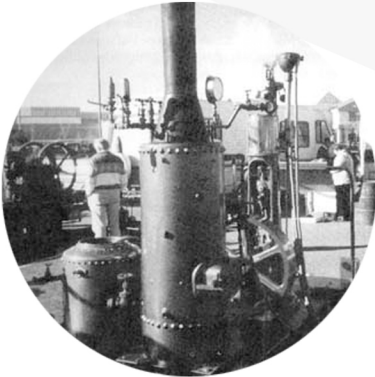
## ACTIVITIES

Under the expert guidance of professional archaeologists, the 5-day field school will allow participants to gain real experience in archaeological methods, principles and processes. Participation is open to university students, teachers and interested members of the public.



## ABOUT BREMER MILLS

The Bremer Mills Estate has a long history of industrial use from first settlement by Europeans in the 1850s. It has been used at various times for mining, grazing, crop production, as well as being the site of a historic flour mill, sawmill and boiling down works.



## LEARNING OUTCOMES

- Day 1: Site prediction, survey and mapping
- Day 2: Testing strategy, excavation principles
- Day 3 & 4: Excavation, sieving, artefact analysis, cataloging and photography.
- Day 5: Stratigraphy, section drawing and site interpretation.



Everick Foundation is an ACNC registered charity.



@EverickFound



@EverickFoundation



@everickfoundation

[www.everick.com.au](http://www.everick.com.au)

